

## Residential AeroTherm™ Series Energy Saver Heat Pump Water Heater



Photo is of  
**RE2H50R10**

### AeroTherm™ Heat Pump Model Features:

- **ENERGY STAR® Qualified**—These models qualify for the September 1st, 2010 minimum ENERGY STAR® EF requirement, as well as most utility rebate programs.
- **The AeroTherm™ Series Control Panel**—Provides detailed diagnostic information including water heater fault codes, tank codes, need to assess codes, and heat pump codes. Additional functions allow you to monitor the status of temperature sensing thermistors and heating components.
  - **User Friendly, Easy to Read Display.**
  - **LED's Clearly Indicate the Current Operating Mode.**
  - **Display Communicates Current Status, Mode and Set Point, and Displays Error Messages When Applicable.**
- **Operating Modes Offer Flexibility.**
  - **Heat Pump (Only) Mode**—Maximizes consumer savings. The most energy efficient mode as it only utilizes the heat pump.
  - **Hybrid Mode**—Saves while experiencing fast recovery. Hybrid mode is the factory setting combining heat pump efficiency and savings with recovery rates of standard electric when needed.
  - **Electric (Only) Mode**—Operates like a standard electric water heater, and eliminates the air flow and sound from the heat pump system when preferred (fastest recovery time, but least energy efficient).
  - **Vacation Mode**—Adjusts the temperature set point down to 50°F for 3-14 days.
- **Quiet Operation**—Operating sound level of approximately 55 DBA.
- **Can Be Laid Down for Easier Transportation**—Easy to open, protective packaging.
- **Easily Accessible Top Mounted Washable Air Filter**—User is automatically alerted when the air filter needs to be cleaned.
- **Operating air temperature range of 45-120°F for the Heat Pump**—(Unit operates in Standard/Electric Mode outside of this range).
- **Backup Electric Heating Elements.**
- **Direct Heat Transfer With Immersed Elements**—Transfers heat directly and efficiently to the water. Screw-in style.
- **2" Non-CFC Foam Insulation**—Covers the sides and top of the tank, reducing the amount of heat loss. This results in less energy consumption, improved operation efficiencies and jacket rigidity.
- **Water Connections**—3/4" NPT factory installed true dielectric fittings extend water heater life and eases installation.
- **Protective Magnesium Alloy Anode Rod**—Provides added protection against corrosion for long trouble-free service.
- **T&P Relief Valve**—Installed.
- **Low Restriction Brass Drain Valve**—Durable tamper proof design.
- **Design Certified to NSF/ANSI 372 (Lead Content).**
- **Optional Ducting Kit**—Maximum duct length of 100 feet combined between inlet and exhaust.

### FEATURING:



### 10-Year Limited Tank and Parts Warranty.

For more information on warranty, please visit [www.bradfordwhite.com](http://www.bradfordwhite.com)

For products installed in USA, Canada and Puerto Rico. Some states do not allow limitations on warranties. See complete copy of the warranty included with the heater.

# Residential Heat Pump Water Heater

## AeroTherm™ Energy Saver Model

C.E.C. Listed

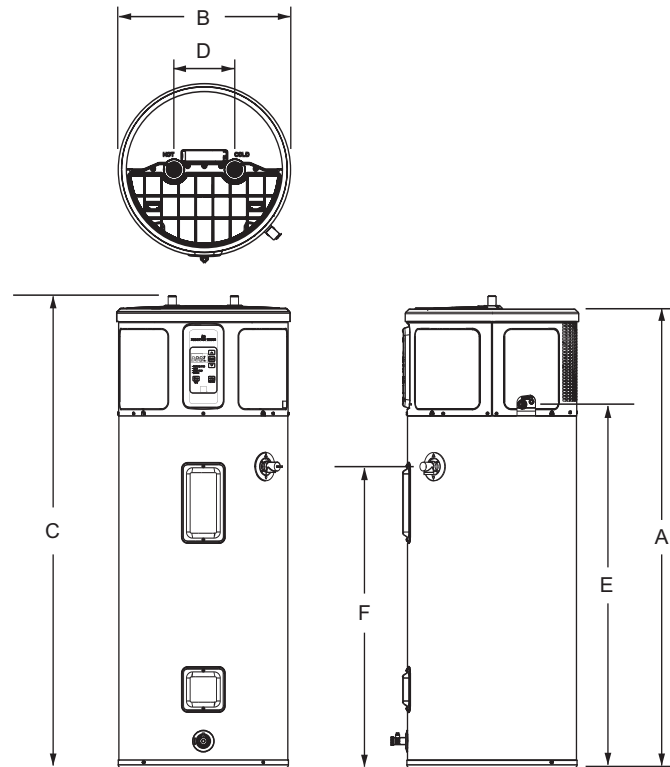
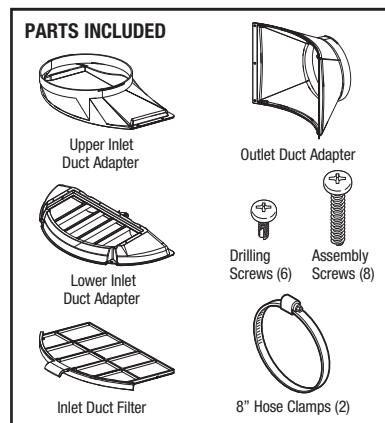
Model Number	Capacity		Recovery 90°F Rise		A Floor to Heater Top	B Jacket Dia.	C Floor to Water Conn.	D Distance Between Water Conn.	E Floor to Condensate Conn.	F Floor to T&P Conn.	Approx. Shipping Weight
	U.S. Gal.	Imp. Gal.	U.S. GPH*	Imp. GPH*	in.	in.	in.	in.	in.	in.	lbs.
RE2H50R10	50	42	21	18	59 <sup>1</sup> / <sub>8</sub>	21 <sup>3</sup> / <sub>4</sub>	60 <sup>3</sup> / <sub>4</sub>	8	46 <sup>3</sup> / <sub>4</sub>	38 <sup>3</sup> / <sub>4</sub>	195

Model Number	Capacity		Recovery 50°C Rise		A Floor to Heater Top	B Jacket Dia.	C Floor to Water Conn.	D Distance Between Water Conn.	E Floor to Condensate Conn.	F Floor to T&P Conn.	Approx. Shipping Weight
	Liters		Liters/*	Hour	mm.	mm.	mm.	mm.	mm.	mm.	kg.
RE2H50R10	189		79		1502	552	1543	203	1187	984	88

\*Based on 4500/4000W, Non-Simultaneous operation.

**Optional Ducting Kit:** Part No. GVK8HS.  
Kit installation also requires - 8" insulated flexible ducting, ducting support hangers and exterior wall vents for inlet & outlet. Additional clearances required for ducting, refer to ducting kit instructions.



### Meets NAECA Requirements

#### General

All models are UL listed. These heaters are wired inter-locking (Non-Simultaneous, Single Phase) 240V with two 4500W elements, unless otherwise specified. All water connections are 3/4" NPT (19mm) and electrical connections are 1/2" NPT (13 mm). All models certified at 300 PSI test pressure (2068 kPa) and 150 PSI working pressure (1034 kPa).

**Dimensions and specifications subject to change without notice in accordance with our policy of continuous product improvement. Suitable for Water (Potable) Heating.**

Toxic chemicals, such as those used for boiler treatment, shall NEVER be introduced into this system. This unit may NEVER be connected to any existing heating system or component(s) previously used with a non-potable water heating appliance.



Ambler, PA

For U.S. and Canada field service, contact your professional installer or local Bradford White sales representative.

Sales 800-523-2931 • Fax 215-641-1670 / Technical Support 800-334-3393 • Fax 269-795-1089 • Warranty 800-531-2111 • Fax 269-795-1089

International: Telephone 215-641-9400 • Telefax 215-641-9750 / [www.bradfordwhite.com](http://www.bradfordwhite.com)

**BRADFORD WHITE-CANADA™ INC.** Sales / Technical Support 866-690-0961 / 905-238-0100 • Fax 905-238-0105 / [www.bradfordwhite.com](http://www.bradfordwhite.com)

## Built to be the Best™

©2015, Bradford White Corporation. All rights reserved.